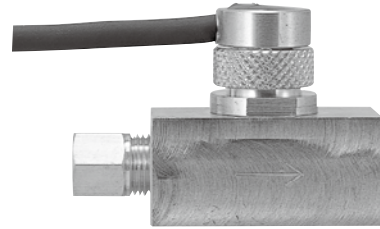


# LUDO-sensor

Oil flow monitoring device. For installation after the metering unit.



## Specifications

### LUDO-sensor

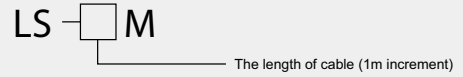
<b>Detection capacity</b>	1ml/cycle (working viscosity 65mm <sup>2</sup> /s)
<b>Working viscosity range</b>	65 - 1300mm <sup>2</sup> /s

## Directions for use

- See the instruction manual

## Model Reference

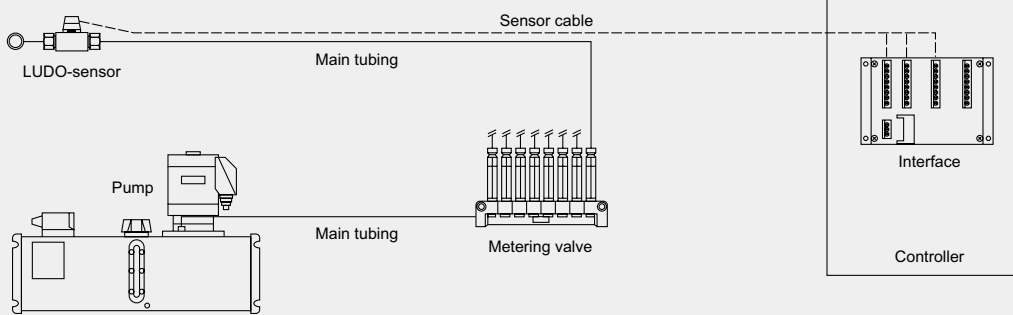
- LUDO-sensor



- Interface

IF - 8CH

## System Planning



Install the sensor near the end of the tubing after the metering valve to detect oil flow inside the tubing.

## Related parts



AMZ-II  
: P.103



AMO-II DS  
: P.107



AMO-II-150S  
: P.109



AMI-300S · 1000S  
: P.111



MO Metering valve  
: P.117



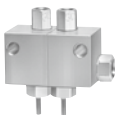
For MO  
Metering valve  
PV Junction  
: P.118



MOS Metering valve  
: P.119



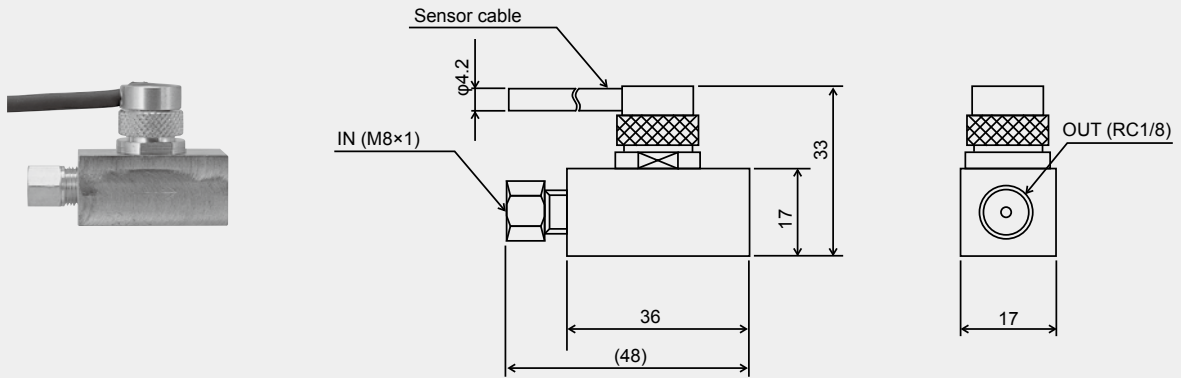
For MOS  
Metering valve  
PVS Junction  
: P.121



MB Metering valve  
: P.123

## Dimensional drawing

[LUDO-sensor]



[Interface]

