

# Air-driven pump for delivering small volumes of vanishing or biodegradable oil

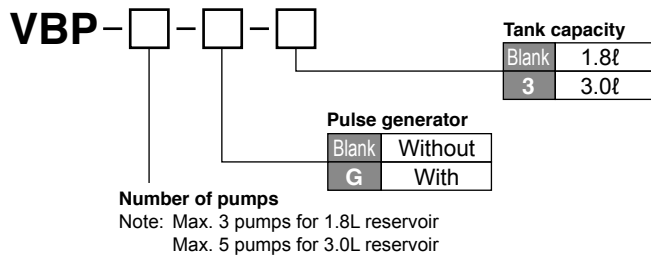
## VBP

For use with many kinds of lubricant oil. Such as biodegradability processing oil and quick-dry processing oil .  
Electrical power supply is not needed. With a pulse generator, the pump is capable of controlling itself, making it suitable for use in explosion proof areas.



[VBP-3]

### Model Reference



### Model

Model	Part Number	Number of pump unit	Generator	Reservoir	
				1.8ℓ	3.0ℓ
VBP-1	112740	1		○	
VBP-2	112741	2		○	
VBP-3	112742	3		○	
VBP-1-G	112746	1	○	○	
VBP-2-G	112747	2	○	○	
VBP-3-G	112748	3	○	○	
VBP-1-3	112752	1			○
VBP-2-3	112753	2			○
VBP-3-3	112754	3			○
VBP-4-3	112755	4			○
VBP-5-3	112756	5			○
VBP-1-G-3	112762	1	○		○
VBP-2-G-3	112763	2	○		○
VBP-3-G-3	112764	3	○		○
VBP-4-G-3	112765	4	○		○
VBP-5-G-3	112766	5	○		○

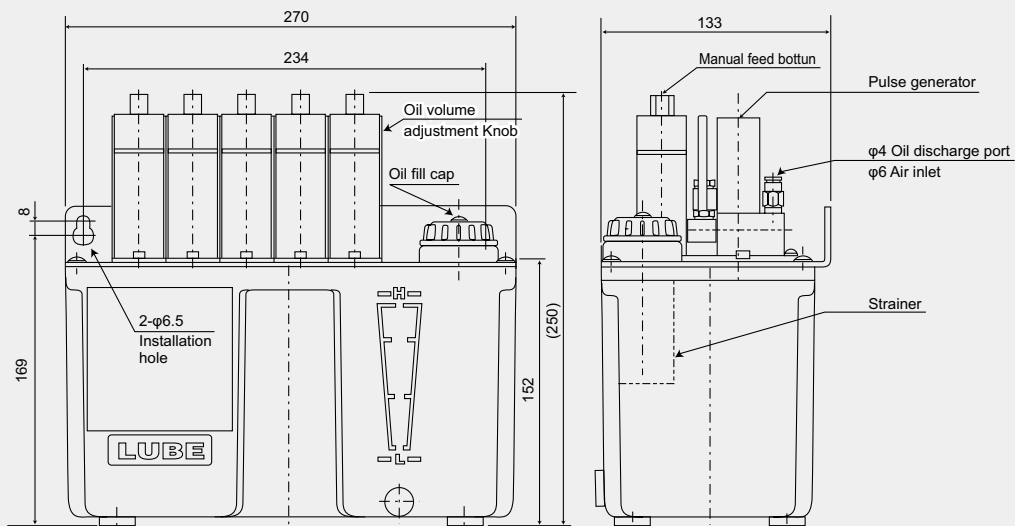
### Specifications

<b>Discharge volume</b>	0 - 0.07ml/shot
<b>Discharge cycle</b>	2shot / sec (MAX)
<b>Effective pump ratio</b>	1 : 5 (Discharge pressure 1.5Mpa when air pressure 0.3Mpa discharge volume 0.05ml/shot)
<b>Air pressure range</b>	0.3 - 0.7MPa 0.4 - 0.7MPa (with pulse generator)
<b>Working viscosity range</b>	2 - 180mm <sup>2</sup> /s
<b>Number of pump units (Standard spec.,)</b>	1.8ℓ reservoir : 3 pumps 3ℓ reservoir : 5 pumps
<b>Reservoir capacity</b>	1.8ℓ, 3ℓ resin reservoir (standard)

### Directions for use

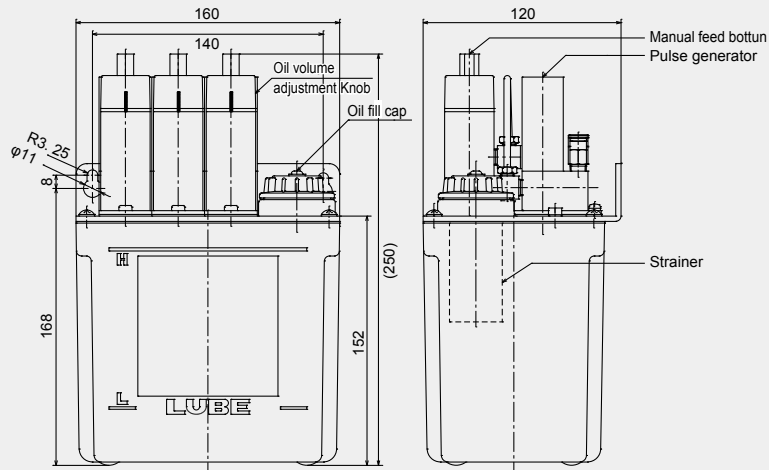
- Contact LUBE for consultation if special fluids must be used.
- Refer to instruction manual

### Dimensional drawing



[VBP-5-G]

## Dimensional drawing



[VBP-3-G]

## Adjustment of VBP pulse generator

### Revolution number of Discharging Volume Adjustment Knob - Discharging Volume

Revolutions of knob	0	1	2	4	6	8	10	12	14
Discharge volume for 1 shot	0	0.005	0.01	0.02	0.03	0.04	0.05	0.06	0.07

Discharging: mL/shot  
Note: 1 revolution is the minimum setting

### Pulse generator adjustment method

Please use flat-head screwdriver for adjusting and refer to table 2. The discharge volume table is just a reference. Pulse oscillator has error range about  $\pm 30\%$ . Please use the table as a rough indication of discharge.

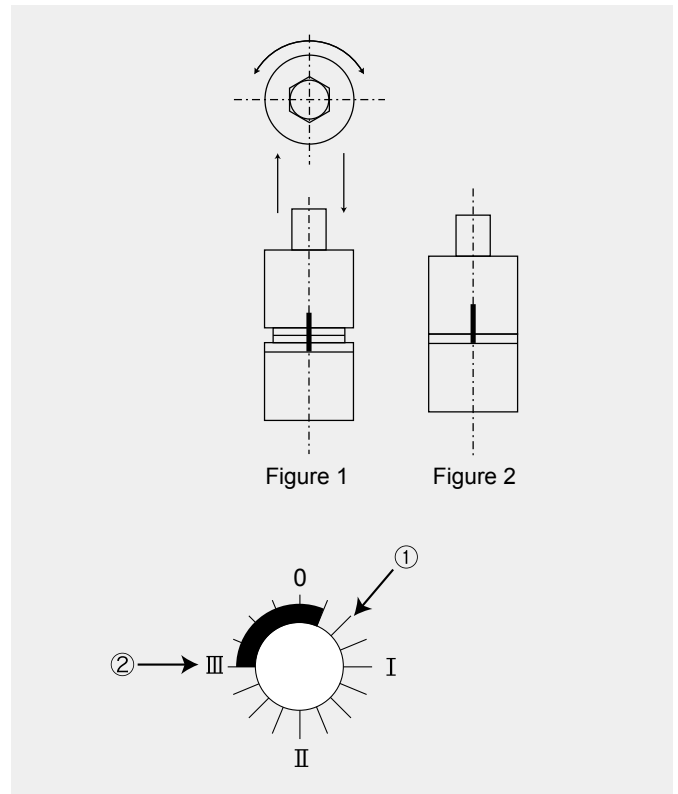
### Scale - Discharging Volume

Position	Scale	Pressure of pressured air		
		0.3	0.4	0.5
1	*	150	130	120
2	III	3	3	3

Discharging times / min

### Air Bleeding Method

Air bleeding is necessary for pump running first time. Bleeding the air with maximum discharging volume.



#### Note:

1. Discharging times of pulse generator depends on the pressure of pressured air. Please set pressure of the pressure of pressured air with decompression valve.
2. At the scale of pulse oscillator, don't use it between part of 1 and 2.