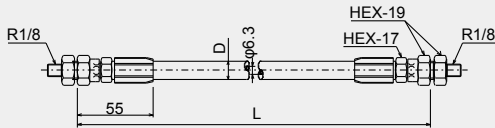


Flexible hose (For moderate and high pressure)

Dimensional drawing

Designated length



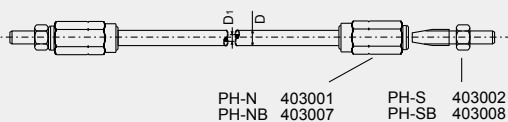
[For moderate and high pressure]

Model

For moderate pressure and high pressure (working temperature -40°C - +100°C)

Model	Part Number	Working pressure (MPa)	Minimum bending radius (R)	D (φ)	L (mm)
L1-5	250151	10	85	13.5	500
L1-7	250152				700
L1-10	250153				1000
L1-15	250154	35	105	15	1500
L3-5	250161				500
L3-7	250162				700
L3-10	250163				1000
L3-15	250164				1500

Free selection of length



For high pressure (working temperature -30°C - +80°C)

Model	Part Number	D (φ)	D ₁ (φ)	Standard length	Working pressure (MPa)	Burst pressure (MPa)	Minimum bending radius (R)	Material	Color
PH-60	403010	8.3	3.6	100	20	72	15	Polyamide	Black
PH-60B	403020	12.37	6.35				40		

PH-60

PH-60B

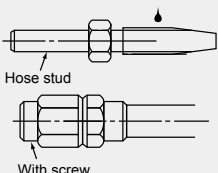
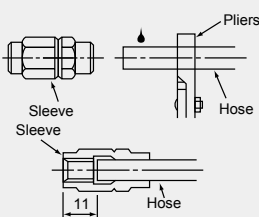
[For high pressure]

Directions for use

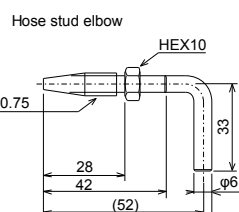
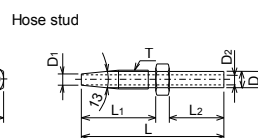
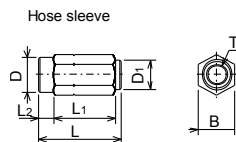
- Please make some allowance for length, bending radius and working pressure.

How to make connections (PH-60)

Insert the hose into the hose sleeve. Then rotate counter-clockwise. Applying some oil on the hose surface will make it easier to handle. Stop when reaching the position 11mm away from the end. Then insert the hose stud by rotating clockwise until the hexagonal portion of the hose stud touches the hose sleeve.



Dimensional drawing



Model

Model	Part Number	T	L	L ₁	L ₂	D	D ₁	B
PH-N	403001	M6×0.75	28	21	5	φ 11.7	φ 10	12
PH-NB	403007	M9×1.0	37	31	4	φ 16.5	φ 14	17

Material: Steel

Model	Part Number	T	L	L ₁	L ₂	D	D ₁	D ₂	B
PH-S	403002	M6×0.75	54	28	21	φ 6	φ 3.9	φ 4	10
PH-SB	403008	M9×1.0	69	35.5	27	φ 8	φ 6.2	φ 5	14

Material: Steel

Model	Part Number
PH-SE	403003

Material: Steel