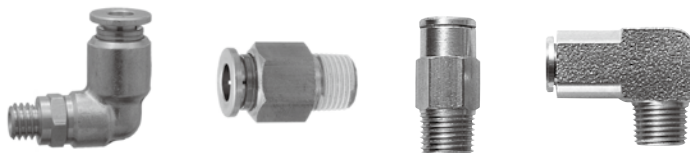


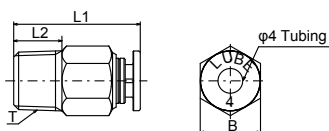
# Push-in fitting



## Specifications

<b>Operating pressure</b>	Oil: Under 3MPa Grease: Under 4MPa	Oil: Under 3MPa
<b>Life</b>	Oil: Under 1,000,000 times Grease: Under 100,000 times	Oil: 1,000,000 times
<b>Working viscosity range</b>	2	
<b>Ambient temperature range</b>	0 - 60°C	
<b>Vibration resistance</b>	4.5G 10 - 55Hz, 9G 55Hz (Fixed)	

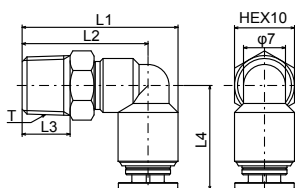
## Dimensional drawing



## Model

Model	Part Number	Outer diameter of tube (φ)	T	B	L1	L2
KBC4-01-F	209503	4	R1/8	HEX10		8
KBC4-02-F	209504		R1/4	HEX14	21	11
KBC4-M6-F	209501		M6×1.0			4.5
KBC4-M6P0.75-F	209502	M6×0.75		HEX10	20	3.5
KBC6-01-F	209513	6	R1/8	HEX12	22.6	8

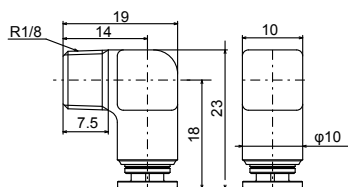
Material: C3604



Model	Part Number	Outer diameter of tube (φ)	T	L1	L2	L3	L4
KBL4-01-FN	209508	4	R1/8	26	21	8	17.4
KBL4-M6-FN	209506		M6×1.0	22.5	17.5	4.5	
KBL6-01-F	209518	6	R1/8	27.5	21.5	8	20.2

Material: C3604

\*Swivel fitting is designed to set direction easily, not to for use at movable places according to the machine movement.



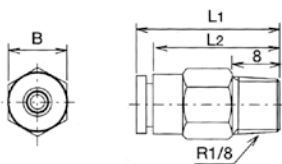
Model	Part Number
KBE4-01-F	209523

Material: C3604

\*Swivel fitting is designed to set direction easily, not to for use at movable places according to the machine movement.

## Specifications

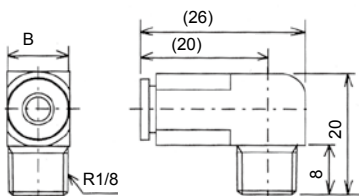
<b>Used liquid</b>	Lubrication oil
<b>Maximum working pressure</b>	6MPa
<b>Working viscosity range</b>	10mm <sup>2</sup> /s
<b>Vibration resistance</b>	9G



## Push-in fitting (Straight)

Model	Part Number	Outer diameter of tube (φ)	L1	L2	B
OTS-4	106369	4	25	22	10
OTS-6	206152	6	27	24	12

For use with nylon tube only.



## Push-in fitting (Elbow)

Model	Part Number	Outer diameter of tube (φ)	B
OTE-4	106373	4	10
OTE-6	206155	6	12

For use with nylon tube only.