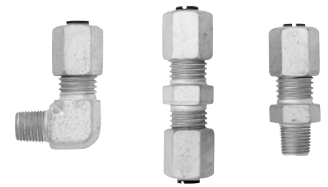


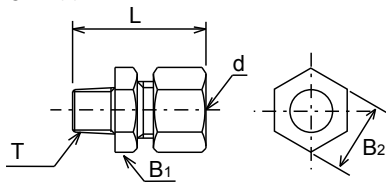
# Adapter assemblies [Fittings for Steel tubing]

High pressure adapters for grease system



## Dimensional drawing

### Straight nipple

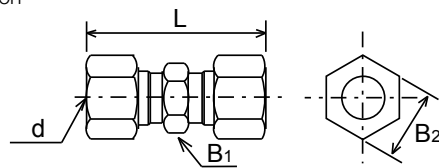


## Model

Material: S25C

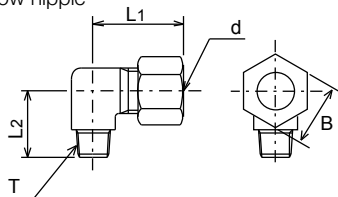
Model	Part Number	Outer diameter d	T	L	B <sub>1</sub>	B <sub>2</sub>
S61-SC	250111	φ6	R1/8	34.5	14.0	14.0
S62-SC	290191		R1/4	37.5		
S81-SC	250131	φ8	R1/8	35.5	17.0	17.0
S82-SC	290190		R1/4	37.5		

### Union



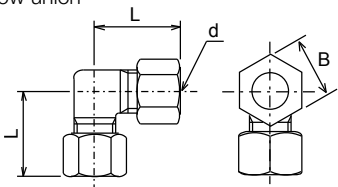
Model	Part Number	Outer diameter d	L	B <sub>1</sub>	B <sub>2</sub>
U6-SC	250112	φ6	43.0	14.0	14.0
U8-SC	250132	φ8	52.0	17.0	17.0

### Elbow nipple



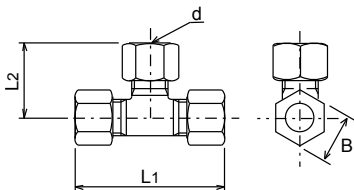
Model	Part Number	Outer diameter d	T	L <sub>1</sub>	L <sub>2</sub>	B
E61-SC	250113	φ6	R1/8	30.5	14.0	14.0
E62-SC	290184		R1/4		17.0	
E81-SC	250133	φ8	R1/8	33.5	16.0	17.0
E82-SC	290043		R1/4		18.0	

### Elbow union



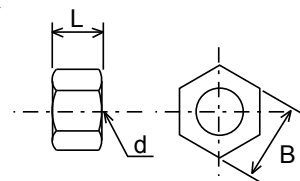
Model	Part Number	Outer diameter d	L	B
EU6-SC	250114	φ6	26.5	14.0
EU8-SC	250134	φ8	33.5	17.0

### Tee



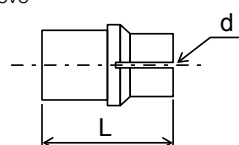
Model	Part Number	Outer diameter d	L <sub>1</sub>	L <sub>2</sub>	B
T6-SC	250115	φ6	53.0	26.5	14.0
T8-SC	250135	φ8	67.0	33.5	17.0

### Nut



Model	Part Number	Outer diameter d	L	B
N6-SC	250119	φ6	13.0	14.0
N8-SC	250139	φ8	15.0	17.0

### Sleeve



Model	Part Number	Outer diameter d	L
F6-SC	250118	φ6	14
F8-SC	250138	φ8	