

Positive Displacement Injector Electric Pump PDI plus Progressive Twin Electric Pump

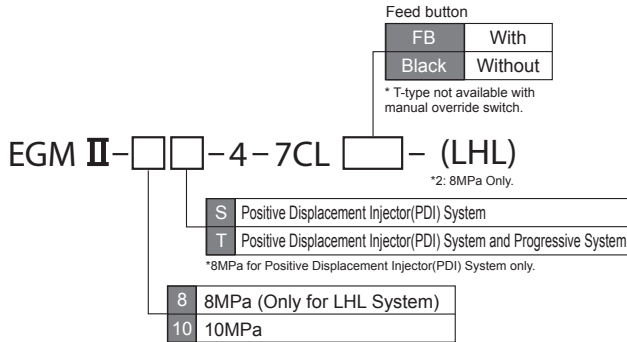
EGM II

Small, low cost pump for our original cartridge grease.



[EGM II]

Model Reference



Model

Model	Part Number
EGMII -10S-4-7CL	103937
EGMII -10S-4-7CLFB	103938
EGMII -10T-4-7CL	103947
EGMII -8S-4-7CLFB-LHL	103936
EGMII -8S-4-7CL-LHL	103935

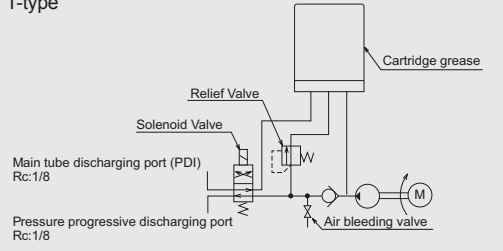
Specifications

Power	DC24V
Power Consumption	45.6W
Discharging pressure	8MPa (Only for LHL System) 10MPa
Maximum discharging time	7m 30s
Minimum interval time	3 times discharging time
Wiring method	Terminal connection
Manual override switch	Yes (Optional: Only PDI system) *1
Grease level switch	Yes
Solenoid cover	Non combustible plastic (UL94-V0)
NEMA rating	IP54
CE approval	Yes
Pump air bleeding valve	Yes
Weight	2.0kg (With manual operating switch: 2.1kg)

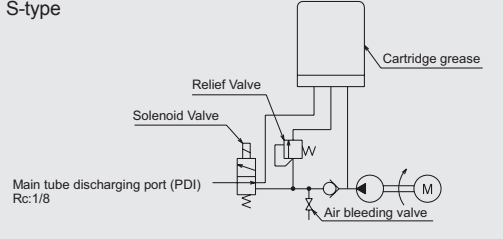
*1 Although the Manual Override Switch provides a dry contact to activate the pump, its capacity is not sufficient to sustain the power required to operate the pump. Therefore, the power needs to be provided directly to the pump from the machine control panel. See wiring diagram P.40.

Hydraulic circuit diagram

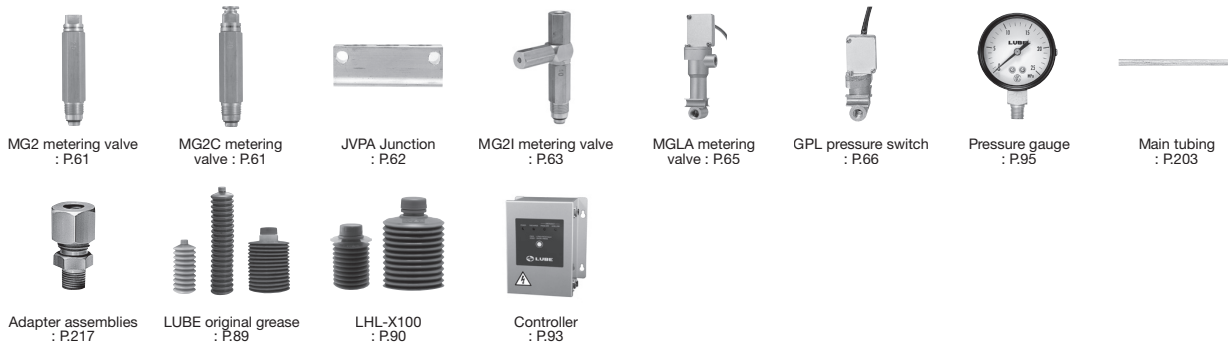
T-type



S-type



Related parts

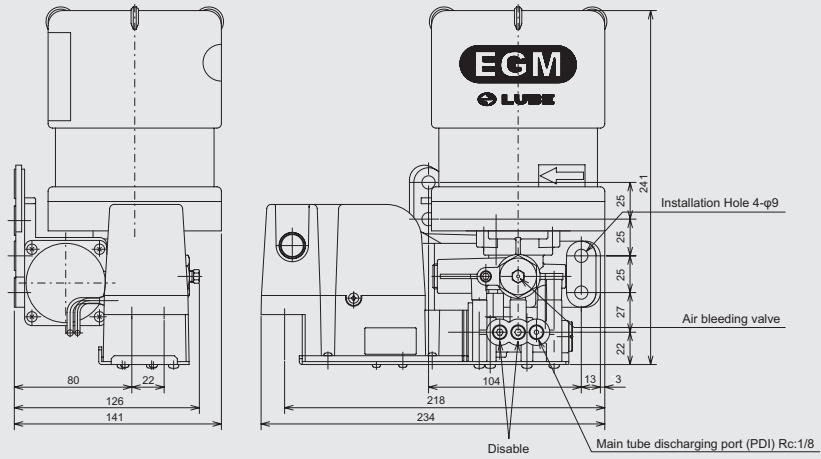


Directions for use

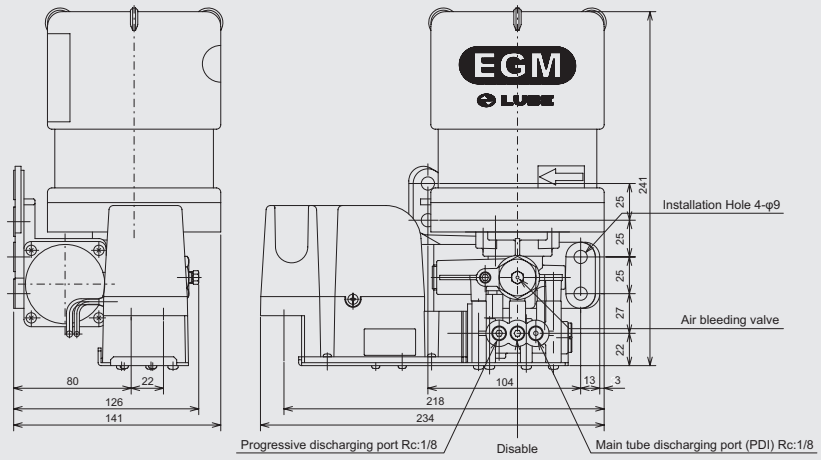
- Use recommended grease only.
- Never use greases containing molybdenum disulfide.
- Use lithium grease. (Contact LUBE for consultation when non-lithium greases must be used.)
- Do not use any greases containing substances that attack brass or rubber.
- When the cartridge is changed, take care that foreign particles are not getting inside.
- Do not discharge continuously.
- After changing the cartridge, bleed the air inside the pump by opening the air bleeding valve.

Dimensional drawing

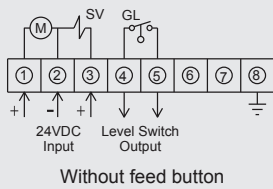
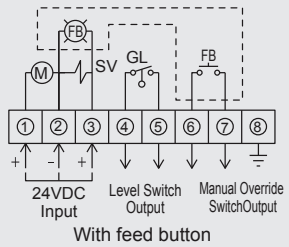
[EGM II-10S-4-7CLFB]



[EGM II-10T-4-7CL]



Wiring diagram



Grease level switch

