

Series Progressive System motorized grease pump

GMN

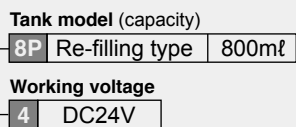
Motor-driven reservoir grease pump. For use with progressive metering blocks making it possible for discharge volume adjustment in accordance with pump operation time.



[GMN-4-8P]

Model Reference

GMN-4-8P



Directions for use

- Use recommended grease only.
- Never use greases containing molybdenum disulfide.
- Use lithium grease. (Contact LUBE for consultation when non-lithium greases must be used.)
- Do not use any greases containing substances that attack brass or rubber.
- When the cartridge is changed, take care that foreign particles are not introduced to pump.
- Do not discharge continuously.
- After filling the pump, bleed the air inside the pump by opening the air bleeding valve.

Model Reference

Model	Part Number
GMN-4-8P	102909

Specifications

GMN-4-8P	
Discharge volume	20ml/min
Discharge pressure	8 MPa (Safety valve set pressure)
Working consistency	NLGI No.000, 00, 0 and 1 (Lithium grease)
Recommended grease	MP0 and FS2
Motor	
Working voltage/ Working current	DC24V/1A
Output	15W DC Brush motor
Grease level switch	Optional
Reservoir capacity	800ml
Weight	2.8kg

Related parts



SP series progressive valve
: P.77



AP series progressive valve
: P.77



Pressure gauge
: P.95



Main tubing
: P.203



Adapter assemblies
: P.217



Pneumatic pump for pail
: P.96



Hand grease gun
: P.96



Lub pack
: P.96

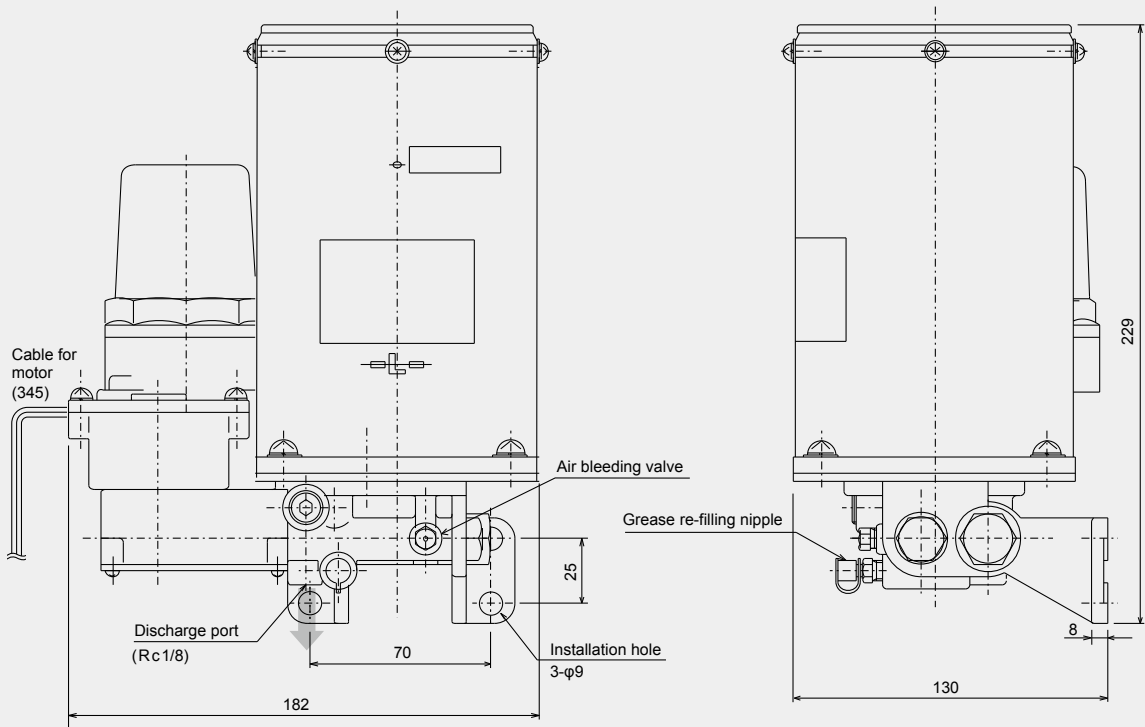


Controller
: P.93



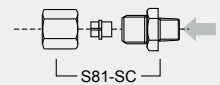
Power box
: P.93

Dimensional drawing



[GMN-4-8P]

Parts for connecting to the discharge port



Hydraulic circuit drawing

